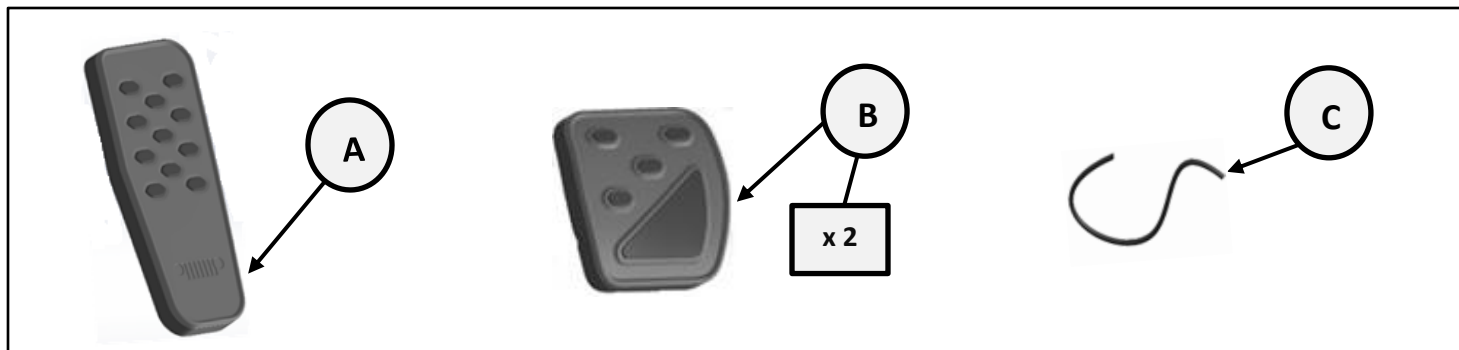




## Manual Pedal Cover Kit

www.mopar.com

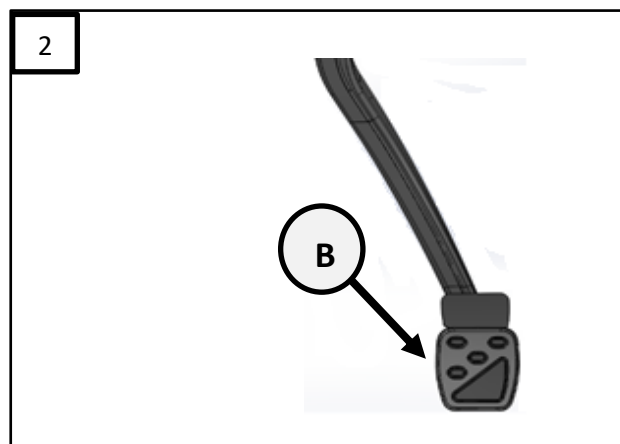
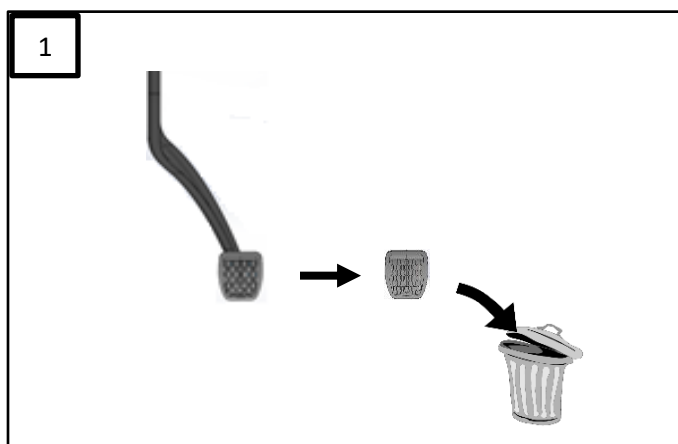


### TOOLS REQUIRED:

- Mirror
- Rope (included)
- Window cleaner or soap solution in bucket

### PRE-INSTALLATION WARNINGS, CAUTIONS, CRITICAL STEPS, NOTES:

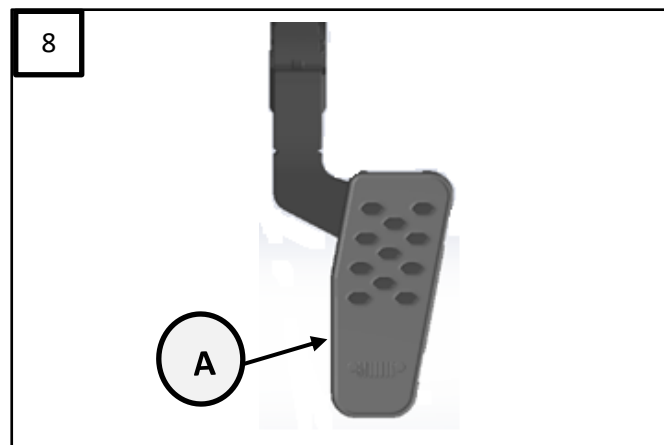
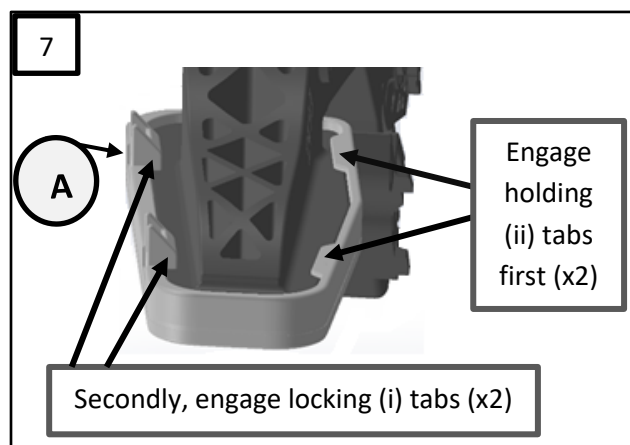
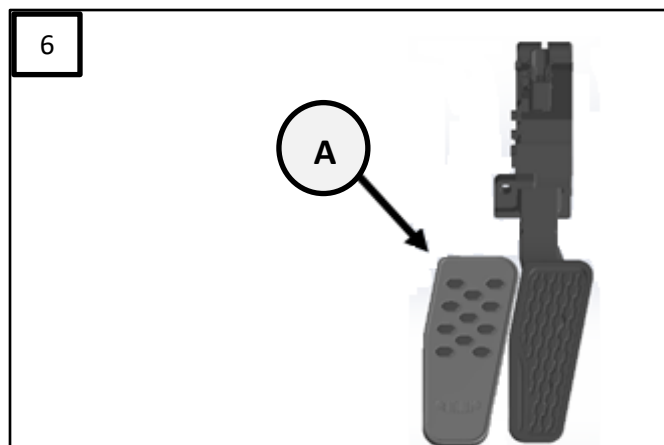
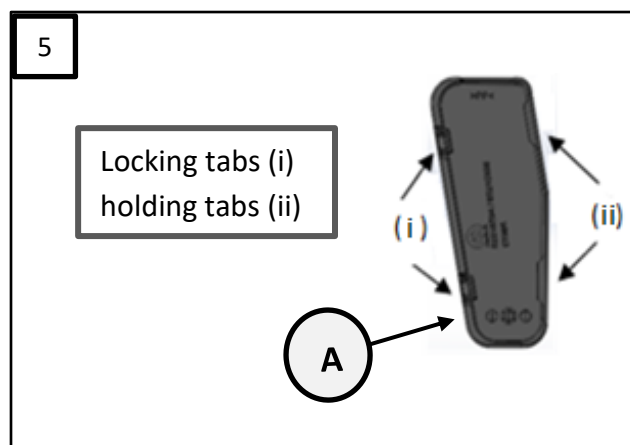
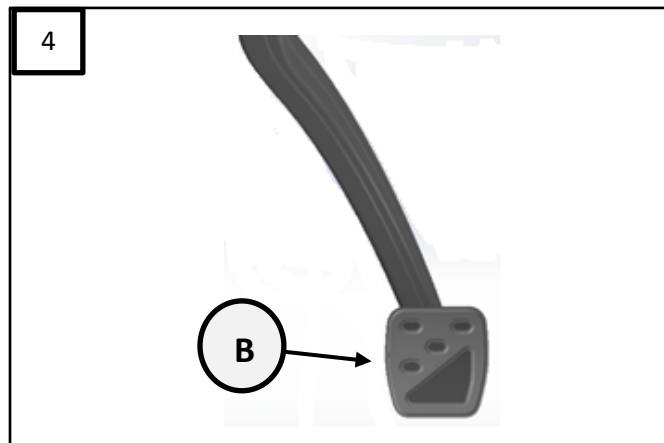
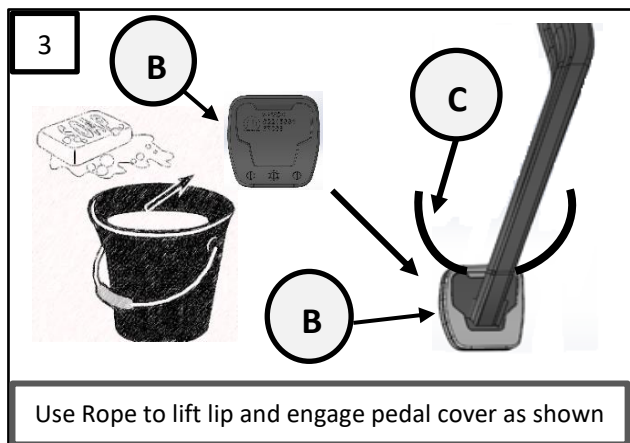
- Make sure engine is turned off.
- Read the installation sheet and check the entire kit for possible damage or defects before performing any work.
- Installation by dealer is highly recommended.
- After installation, use mirror to check the back side of the pedals to ensure pedal pads are fully installed correctly. If not fully seated, part must be removed and re-installed correctly.
- These parts are to be installed when the ambient temperature is 68° F (20° C) and above.





# Manual Pedal Cover Kit

www.mopar.com



\*Repeat steps 1-4 for clutch pedal.

For customer service questions, refer to your Chrysler, Dodge, Jeep, Ram or Fiat dealership.